

SYMMETRA SERIES

An elegant new environment for learning



Navetta™

SYMMETRA

Elegant and durable—modern design at the intersection of form and function.



DESIGNED FOR LEARNING

The Symmetra fixed table system provides a unique, integrated environment for learning. The clean and modern design even extends to the under-table raceway system. Symmetra is a confident blend of form and function that will complement any advanced learning environment.

PRACTICAL AESTHETIC

Symmetra stands on ultra-rigid steel pedestals, and each installation is individually designed to fit perfectly with the size and appearance of your facility.



SYMMETRA PLUS

The ultimate lecture room solution integrated seating



INTEGRATED SEATING SYSTEM

Symmetra Plus adds the convenience of swing out seating to your facility. Choose from several comfortable and sturdy seat types, with or without upholstery.

DESIGNED FOR YOU

The Symmetra and Symmetra Plus fixed table systems can be as simple or as comprehensive as you like. Start with a basic table design, and choose materials, trim options, and colors. You can add integrated power and data systems, swing-out seats, special end panels and modesty panels, and more.

INNER BEAUTY

Precision engineering provides innovative functionality and durability

INTERLOCKING DESIGN

Modesty panel interlocks into tabletop surface for extra rigidity.

PERFECT-FIT SUPPORT SYSTEM

Precision laser-cut structural steel brackets adjust for exact fit in any installation, then lock in place.

CONNECTIVITY SOLUTIONS

Under-table or top-mounted access to integrated modular Power/Data system.

POWER-ENTRY PEDESTAL

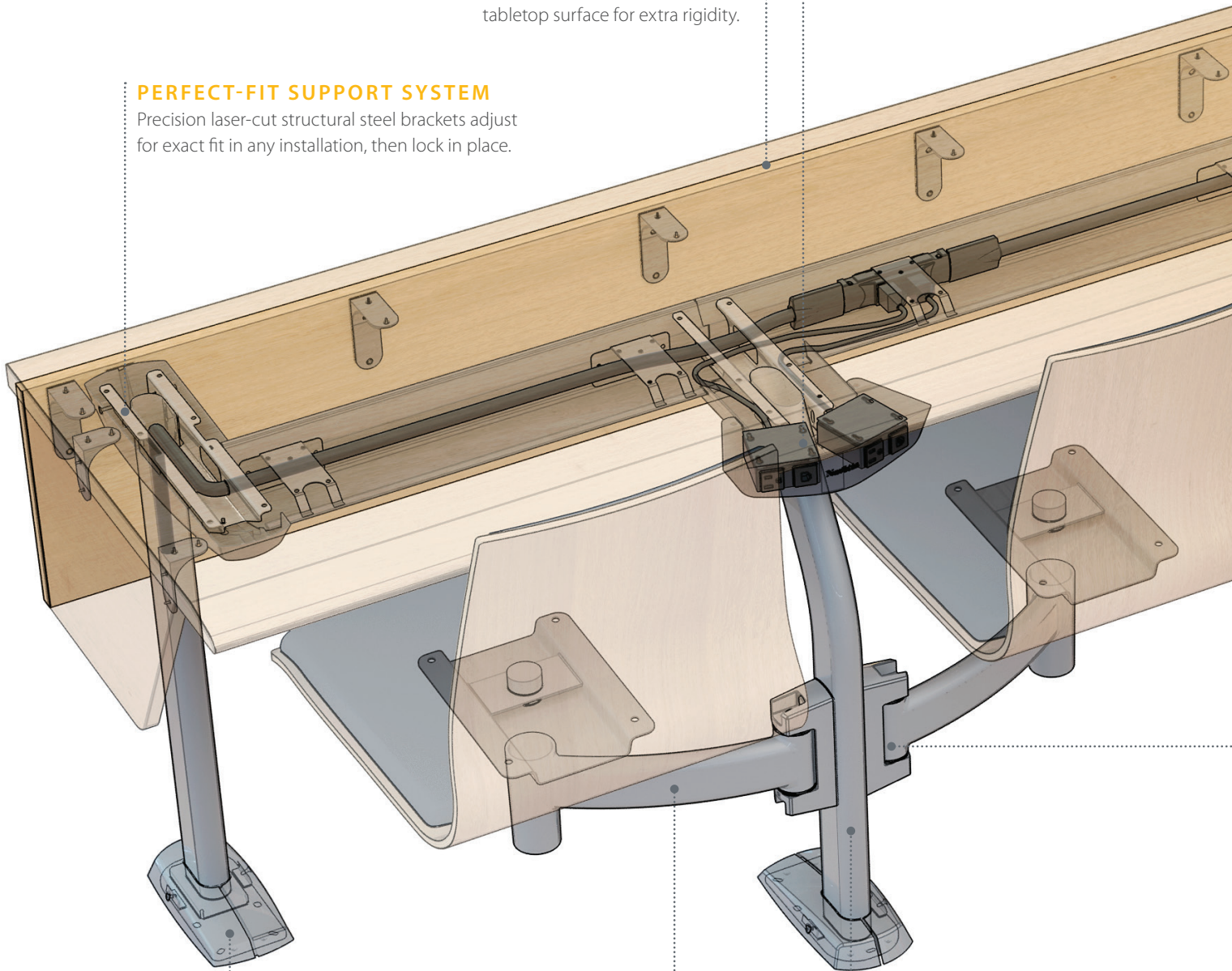
Provides convenient access to power and data connections during installation.

CURVED SEAT SUPPORT ARM

Unique design provides increased legroom and elegant appearance.

ARC-DESIGN PEDESTAL

A single length of rugged oval steel tubing is precision-formed to eliminate sharp corners and the possibility of welding imperfections.



SECURE WIRE MANAGEMENT

All power and data connections and wiring are concealed beneath a secure integrated raceway system.

CAD-BASED PRECISION

Each component is factory-engineered and manufactured with precisely located pre-drilled holes for a perfect fit.

COMPREHENSIVE SEAT OPTIONS

Symmetra Plus can be supplied with a wide variety of premium seat styles and designs, with or without upholstery.

ABUSE-PROOF FOOT COVERS

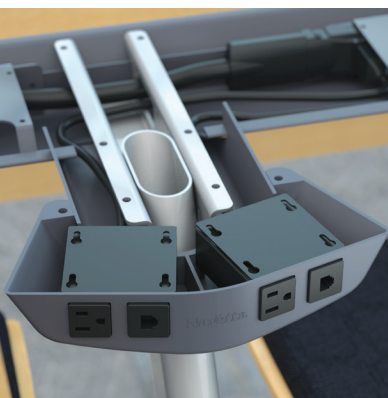
Ultra-rugged toughened nylon foot covers are virtually unbreakable– and designed for the most demanding environments.

SPRING-RETURN SWINGARM

Rugged swingarm design with internal torsion spring provides full access, then returns to flush position when not in use.

SILENT-ROTATION SEAT BASE

Seat support cylinders provide full rotation and automatically align with table when not occupied. Adjustable height cylinders also available.



LEADING EDGE

Providing the ultimate designs for learning

CLEAN DESIGN, OPEN MINDS

Too often, architectural products compromise form over function—or vice versa. At Navetta, we treat the art and science of product design in a very different way. Our team of engineers and designers has collaborated to create modern, functional educational furniture with clean lines, smart design, and superior engineering. As a result, our fixed seating systems are as elegant as they are durable.

INFINITE POSSIBILITIES

Transform and customize your facility with our Symmetra fixed table system. Each installation is specially designed to meet your exact requirements—from single classrooms to oversized lecture halls; with flat, sloped, or tiered floors; in straight or curved rows; with or without integrated seating.

MAY WE HELP YOU?

Our collaborative design process continues as we work with you, from design through installation. Whatever your vision for your learning environments, we will work with you to bring that vision to life. Contact us today to start the conversation.





